
Adaptive Estimation Scheme for Real Time Control of Three-Phase Grid Voltage Parameters

Abhaya N. Pande

R.H.S.C.O.E. Mgmt Studies and Research

Dr. Anagha P. Khedkar

R.H.S.C.O.E. Mgmt Studies and Research

ABSTRACT

The aspect of power quality issues has become serious with more and more penetration of renewable sources i.e. (weak grid) with the conventional utility grid i.e. (stiff grid). At PCC (Point of common coupling) it has become mandatory to provide an adaptive scheme as comprehensive solution to address control, protection and power quality issues. The control strategy proposed consists of an inner inductor current loop, and a novel voltage loop in the synchronous reference frame. The inverter is regulated as a current source just by the inner inductor current loop in grid-tied operation, and the voltage controller is automatically activated to regulate the load voltage upon the occurrence of islanding. This control strategy is validated by simulation results carried out in MATLAB for grid connected and islanding mode. The current harmonics get reduced and dynamic performance of the system is improved.

KEYWORDS

Adaptive scheme; distributed generation; islanding; point of common coupling (PCC); Power quality issues; three-phase inverter.

INTRODUCTION

Recently, renewable sources such as wind energy and solar energy, often behaving as distributed power generation systems (DPGSs), have a high penetration in the grids [1]. When these renewable sources are connected to the grid, power converters, such as voltage source inverter (VSI) working as efficient and flexible energy conversion interfaces, are applied in a variety of applications of DPGSs [2] and active power filters (APFs) [3–5]. For the purpose of real time control of power systems, estimation of the grid voltage parameters is essential for power converters to synchronize the grid current with the grid voltage [6]. A classical method for the estimation of grid voltage parameters, known as the synchronous reference frame phase locked loop (SRF-PLL), has been widely used [7] in industry. However, the increasing applications of the renewable sources and the presence of various nonlinear loads in the modern grids often induce grid faults and harmonic disturbances. As a result, the traditional SRF-PLL is hard to be applied for an effective and satisfactory estimation of the grid voltage parameters when there exist unbalanced faults and harmonic voltage disturbances in the grids. In the past decade, a number of methods have been proposed to address the estimation problem of the grid voltage parameters under unbalanced faults and harmonic disturbances. In the paper [10], the authors presented an estimation approach called zero-crossings detection (ZCD). The ZCD method is very simple. However, it has slow dynamic responses and often results in signal jitters. By comparison, a variable sampling frequency method proposed in the work [11] has a faster dynamic response. A disadvantage of the result in [11] is that adjusting the system sampling frequency is not easy, which, in turn, yields steady state estimation error. To implement real-time control for power systems, we propose in this work an adaptive observer-based, closed loop feedback approach for the estimation of three-phase grid voltage parameters including fundamental and harmonic frequencies, amplitudes and phase angles. Although our estimation scheme is based on time-domain, it does not depend on PLL (phase-locked loop), QSG (quadrature signal generation) and complex filtering, and thus in this sense is different from many existing time-domain methods. In the grid-tied operation, DG deliveries power to the utility and the local critical load.

Upon the occurrence of utility outage, the islanding is formed. Under this circumstance, the DG must be tripped and cease to energize the portion of utility as soon as possible according to IEEE Standard 929-2000 [4]. However, in order to improve the power reliability of some local critical load, the DG should disconnect to the utility and continue to feed the local critical load [5]. The load voltage is key issue of these two operation modes, because it is fixed by the utility in the grid-tied operation, and formed by the DG in the islanded mode, respectively. Therefore, upon the happening of islanding, DG must take over the load voltage as soon as possible, in order to reduce the transient in the load voltage. And this issue brings a challenge for the operation of DG. Simulations and experiments are carried out, to demonstrate the effectiveness and performance of the proposed estimation scheme. As illustrated by simulations and experiments, the adaptive observer and control strategy is easy to be implemented, and capable of achieving a fast and accurate estimation of three phase grid voltage parameters with a unified load current feed-forward control strategy.

The next section presents need of proposed system and its contents.

FAULT ANALYSIS IN POWER SYSTEMS

In general, a fault is any event, unbalanced situation or any asymmetrical situation that interferes with the normal current flow in a power system and forces voltages and currents to differ from each other. It is important to distinguish between series and shunt faults in order to make an accurate fault analysis of an asymmetrical three-phase system. When the fault is caused by an unbalance in the line impedance and does not involve a ground, or any type of inter-connection between phase conductors it is known as a series fault. On the other hand, when the fault occurs and there is an inter-connection between phase-conductors or between conductor(s) and ground and/or neutral it is known as a shunt fault. [3] Statistically, series faults do not occur as often as shunt faults does. Because of this fact only the shunt faults are explained here in detail since the emphasis in this project is on analysis of a power system under shunt faults.

THREE-PHASE FAULT

By definition a three-phase fault is a symmetrical fault. Even though it is the least frequent fault, it is the most dangerous. Some of the characteristics of a three-phase fault are a very large fault current and usually a voltage level equals to zero at the site where the fault takes place.

Under faulty conditions such as three-phase faults the load voltage gets reduced and grid current gets increased due to which the system becomes unstable as shown below.

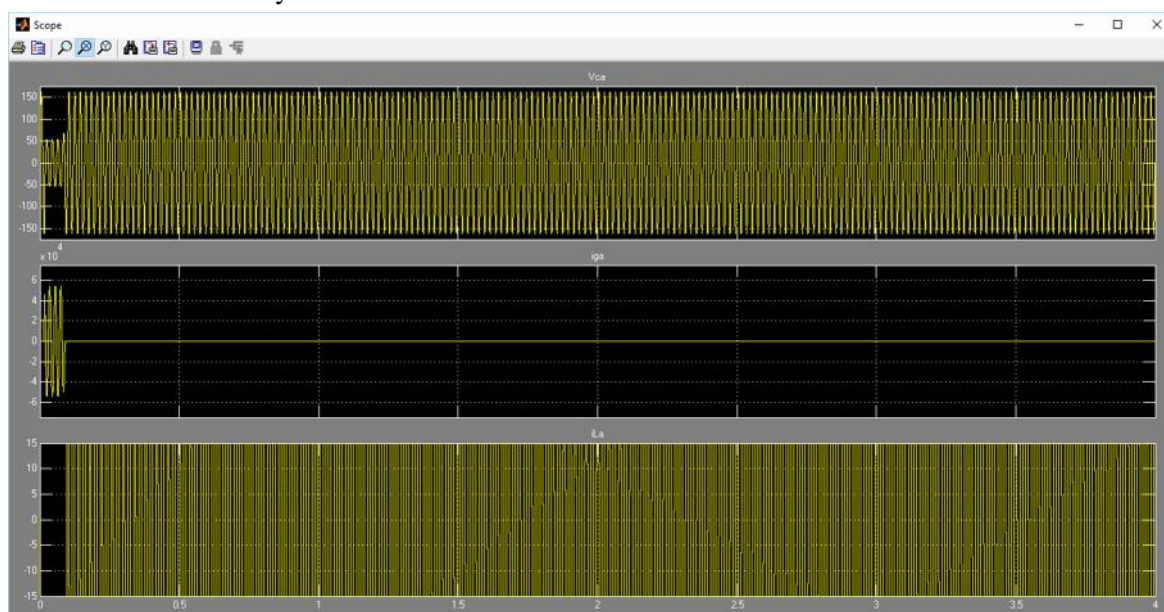


Fig.1. Simulation waveforms of load voltage V_{ca} , grid current i_{ga} , and inductor current i_{La}

So there is a need of an adaptive scheme which will regulate the grid voltage parameters and maintain the grid current within certain limits as per the required load demands.

PROPOSED SYSTEM

Proposed control strategy

The proposed control strategy for estimating the three phase grid voltage parameters has been explained below.

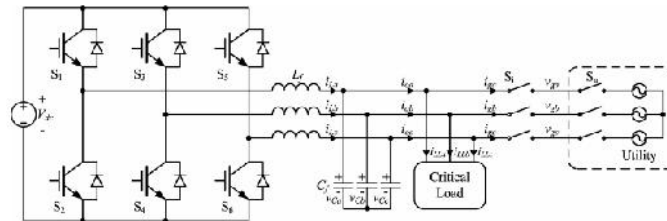


Fig.2. Proposed Control Strategy

In this paper a unified control strategy for a three phase inverter in DG is presented to operate in both islanded and grid-tied modes. The schematic diagram of the DG based on the proposed control strategy is shown by Fig. 1. The DG is equipped with a three-phase interface inverter terminated with a LC filter. The primary energy is converted to the electrical energy, which is then converted to dc by the front-end power converter, and the output dc voltage is regulated by it. Therefore, they can be represented by the dc voltage source V_{dc} in Fig. 1. In the ac side of inverter, the local critical load is connected directly. It should be noted that there are two switches, denoted by S_u and S_i , respectively, in Fig. 1, and their functions are different. The inverter transfer switch S_i is controlled by the DG, and the utility protection switch S_u is governed by the utility. When the utility is normal, both switches S_i and S_u are ON, and the DG in the grid-tied mode injects power to the utility. When the utility is in fault, the switch S_u is tripped by the utility instantly, and then the islanding is formed. After the islanding has been confirmed by the DG with the islanding detection scheme [13]–[17], the switch S_i is disconnected, and the DG is transferred from the grid-tied mode to the islanded mode. When the utility is restored, the DG should be resynchronized with the utility first, and then the switch S_i is turned ON to connect the DG with the grid.

PARAMETERS OF CONTROL SYSTEM

Parameters of control system are as given below.

Table 1. Parameters of the Control System

Sr.No.	Parameters of the Control System	
	Parameters	Value
1	Voltage reference V_{max}	179 V
2	Rated current reference I_{grefd}	9V
3	Rated current reference I_{grefq}	0A
4	Upper value of limiter ω_{max}	$50.2 \times 2\pi$ rad/s
5	Lower value of limiter ω_{min}	$49.8 \times 2\pi$ rad/s

To investigate the feasibility of the proposed control strategy, power rating of a three-phase inverter is 3 kW. The RMS of the rated phase voltage is 115 V, and the voltage reference V_{max} is set as 10% higher than the rated value. The rated utility frequency is 50 Hz, and the upper and the lower values of the limiter in the PLL are given as 0.2 Hz higher and lower than the rated frequency, respectively.

CONCLUSION

From the given control strategy, it is observed that there is no need for switching between two different control architectures, i.e. current controller and voltage controller and the dynamic performance of system gets increased.

The waveform quality of grid current in both modes gets improved resulting into reduction of current harmonics which ultimately increases the overall system stability.

REFERENCES

- [1] J. Rocabert, A. Luna, F. Blaabjerg and P. Rodriguez., "Control of power converters in AC microgrids", IEEE Trans. Power Elec., vol. 27, pp. 4734-4749, 2012.
- [2] Y. Tang, H. He, J. Wen, and J. Liu., "Power system stability control for a wind farm based on adaptive dynamic programming", IEEE Trans. Smart Grid, vol. 6, pp. 166-177, 2015.
- [3] P. Acuna, L. Moran, M. Rivera, J. Dixon, and J. Rodriguez., "Improved active power filter performance for renewable power generation systems", IEEE Trans. Power Elec., vol. 29, pp. 687-694, 2014.
- [4] Z. Zou, K. Zhou, Z. Wang, and M. Cheng., "Frequency adaptive fractional order repetitive control of shunt active power filters", IEEE Trans. Ind. Elec., vol. 62, pp. 1659-1668, 2015.
- [5] R. Ribeiro, T. d. O. A. Rocha, R. M. de Sousa, E. Junior, and A. M. N. Lima., "A robust dc-link voltage control strategy to enhance the performance of shunt active power filters without harmonic detection schemes", IEEE Trans. Ind. Elec., vol. 62, pp. 803-813, 2015.
- [6] F. Blaabjerg, R. Teodorescu, M. Liserre, and A. V. Timbus., "Overview of control and grid synchronization for distributed power generation systems", IEEE Trans. Ind. Elec., vol. 53, pp. 1398-1409, 2006.
- [7] V. Kaura and V. Blasko., "Operation of a phase locked loop system under distorted utility conditions", Appl. Power Elec. Conf., v2, 703-708, 1996.
- [8] J. H. Kim, J. G. Kim, Y. H. Ji, Y. C. Jung, and C. Y. Won., "An islanding detection method for a grid-connected system based on the goertzel algorithm", IEEE Trans. Power Elec., vol. 26, pp. 1049-1055, 2011.
- [9] E. Jacobsen and R. Lyons., "The sliding DFT", IEEE Trans. Power Delivery, vol. 20, pp. 74-80, 2002.
- [10] J. W. Choi, Y. K. Kim, and H. G. Kim., "Digital PLL control for single phase photovoltaic system", IEE P-elect. Pow. Appl., vol. 153, 40-46, 2006.
- [11] I. Carugati, S. Maestri, P. G. Donato, D. Carrica, and M. Benedetti., "Variable sampling period filter PLL for distorted three-phase systems", IEEE Trans. Power Elec., vol. 27, pp. 321-330, 2012.
- [12] Zeng Liu, Jinjun Liu and Yalin Zhao, "A Unified Control Strategy for Three-Phase Inverter in Distributed Generation", IEEE Trans. Power Electronics, vol. 29, no. 3, Mar. 2014
- [13] J. Stevens, R. Bonn, J. Ginn, and S. Gonzalez, "Development and Testing of an Approach to Anti-Islanding in Utility-Interconnected Photovoltaic Systems". Livermore, CA, USA: Sandia National Laboratories, 2000.
- [14] A. M. Massoud, K. H. Ahmed, S. J. Finney, and B. W. Williams, "Harmonic distortion-based island detection technique for inverter-based distributed generation," IET Renewable Power Gener., vol. 3, no. 4, pp. 493-507, Dec. 2009.
- [15] T. Thacker, R. Burgos, F. Wang, and D. Boroyevich, "Single-phase islanding detection based on phase-locked loop stability," in Proc. 1st IEEE Energy Convers. Congr. Expo., San Jose, CA, USA, 2009, pp. 3371-3377.
- [16] S.-K. Kim, J.-H. Jeon, J.-B. Ahn, B. Lee, and S.-H. Kwon, "Frequencyshift acceleration control for anti-islanding of a distributed-generation inverter," IEEE Trans. Ind. Electron., vol. 57, no. 2, pp. 494-504, Feb. 2010.
- [17] A. Yafaoui, B. Wu, and S. Kouro, "Improved active frequency drift antiislanding detection method for grid connected photovoltaic systems," IEEE Trans. Power Electron., vol. 27, no. 5, pp. 2367-2375, May 2012.